

TF-10

TAPE FEEDER Operation Manual

Ver.1 (1996.9)

TF-10

TAPE FEEDER Operation Manual

Ver. 1 (1998.9)

1

Specification

1. Specification

(1) Types of tape feeders

Tape width	Tape feeder kind	Feeding pitch (Parts pitch)						Reel diameter () as option	TF width	Use lane No.		Career tape Max. thick
		2	4	8	12	16	24			32	1250	
8	Emboss tape	△	○						13	1	1	0.4
	Paper tape	△	○					φ178				1.0
	1005paper tape	○	○					φ178				0.8
12	Emboss tape		○	○	○			φ178, (φ382)	25	2	3	0.6
16	Emboss tape		○	○	○			φ382	38	3	3	0.6
24	Emboss tape			○	○	○	◎		38	3	3	0.6
32	Emboss tape				○	○	◎	◎	47	3	5	0.6
	Adhesive				○		◎		49	3	5	0.4
44	Emboss tape				○	○	◎	◎	59	4	5	0.6
56	Emboss tape				○	○	◎	◎	71	5	6	0.6

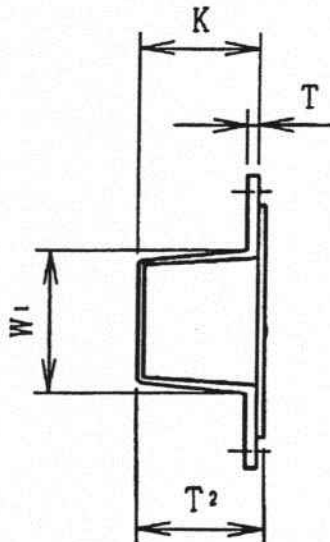
○ shows single-feed and ◎ shows double-feed. (△ shows optional function.)

※ The feeder's pitch is adjusted to the minimum pitch before shipment.

Please adjust it according to your requirement.

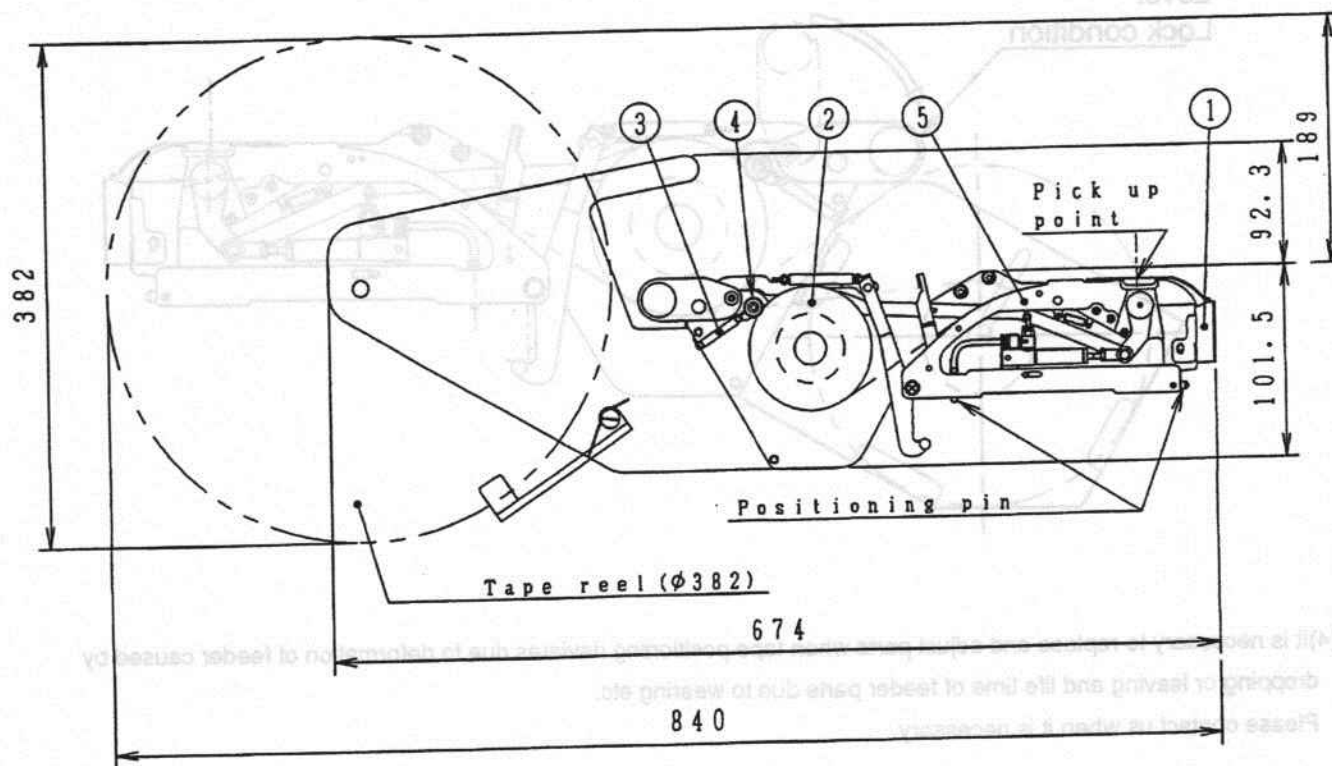
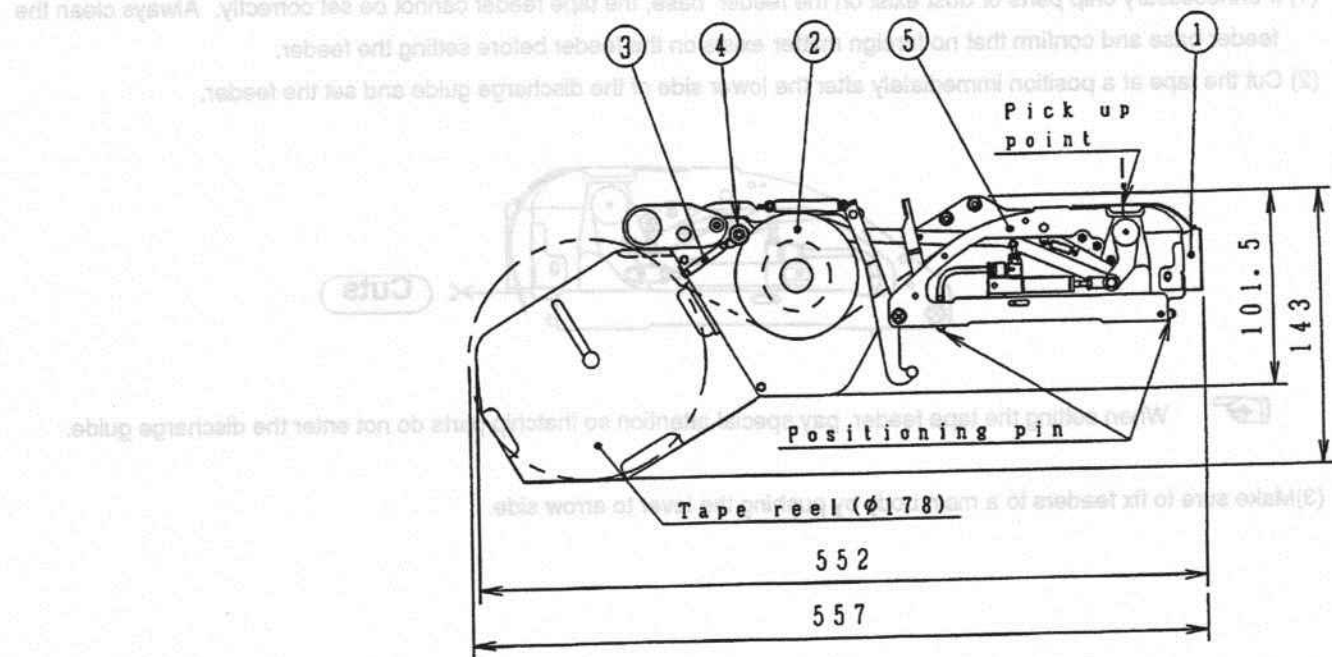
(2) Applicable tapes

Tapes should conform to surface mounting parts defined in JIS.



Tape width	W1
8	4.5 or less
8	8.5 or less
16	12.1 or less
24	20.1 or less
32	25.5 or less
44	37.5 or less
56	49.5 or less

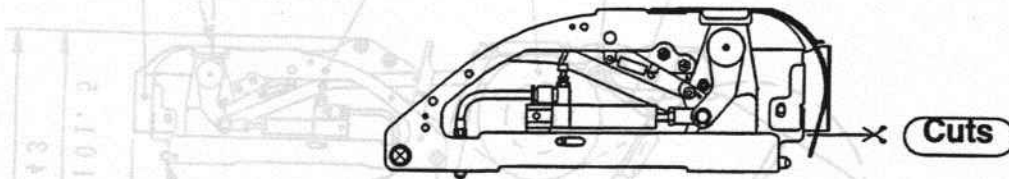
2. Part names and major dimensions



- ① 420 Discharge guide
- ② 602 Winding reel
- ③ 609 Winding spring
- ④ 614 Winding gear
- ⑤ 001 Frame

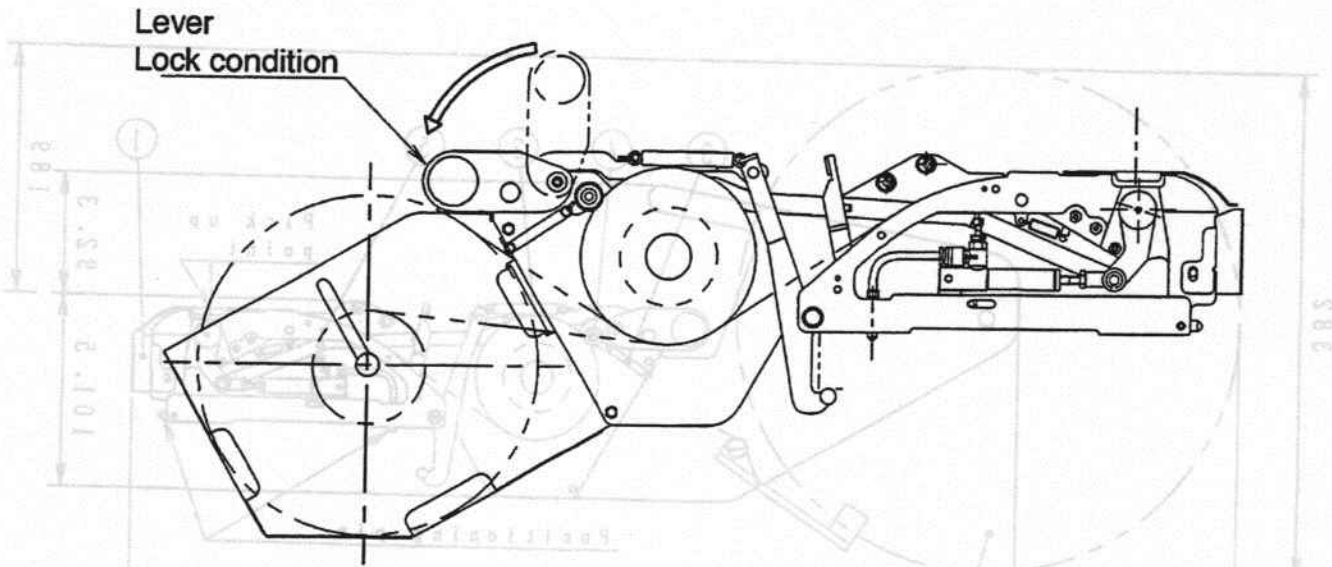
3. Cautions for operation

- (1) If unnecessary chip parts or dust exist on the feeder base, the tape feeder cannot be set correctly. Always clean the feeder base and confirm that no foreign matter exists on the feeder before setting the feeder.
- (2) Cut the tape at a position immediately after the lower side of the discharge guide and set the feeder.



When setting the tape feeder, pay special attention so that chip parts do not enter the discharge guide.

- (3) Make sure to fix feeders to a main body by pushing the lever to arrow side.



- (4) It is necessary to replace and adjust parts when tape positioning deviates due to deformation of feeder caused by dropping or leaving and life time of feeder parts due to wearing etc.
Please contact us when it is necessary.

• Reference

SUZUKI CO.,LTD.

Sales Sec. Dept.1.

2150-1 Ogawara, Suzaka Nagano Pref., 382 Japan.

PHONE:026-245-1360

FAX:026-245-1367

① #50 Discharge guide

② 602 Winding reel

③ 603 Winding spring

④ 614 Winding gear

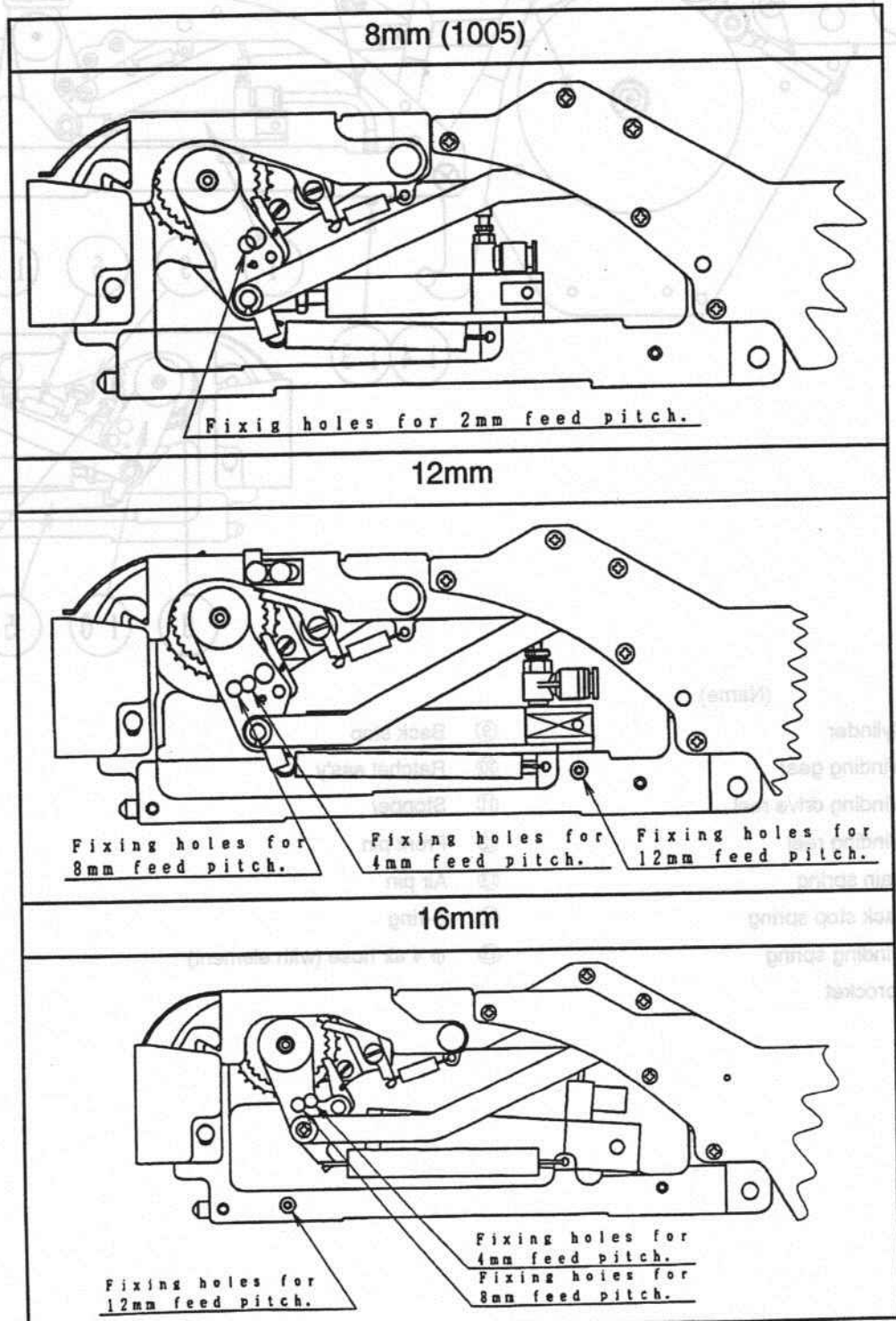
⑤ 601 Frame

4. Setting procedure

(1) Changing the feed pitch

A pitch pin is provided on each feeder excluding 8 mm paper/embossed tape and 32 mm Ad types. The feed pitch can be changed by changing the mounting position of the pitch pin.

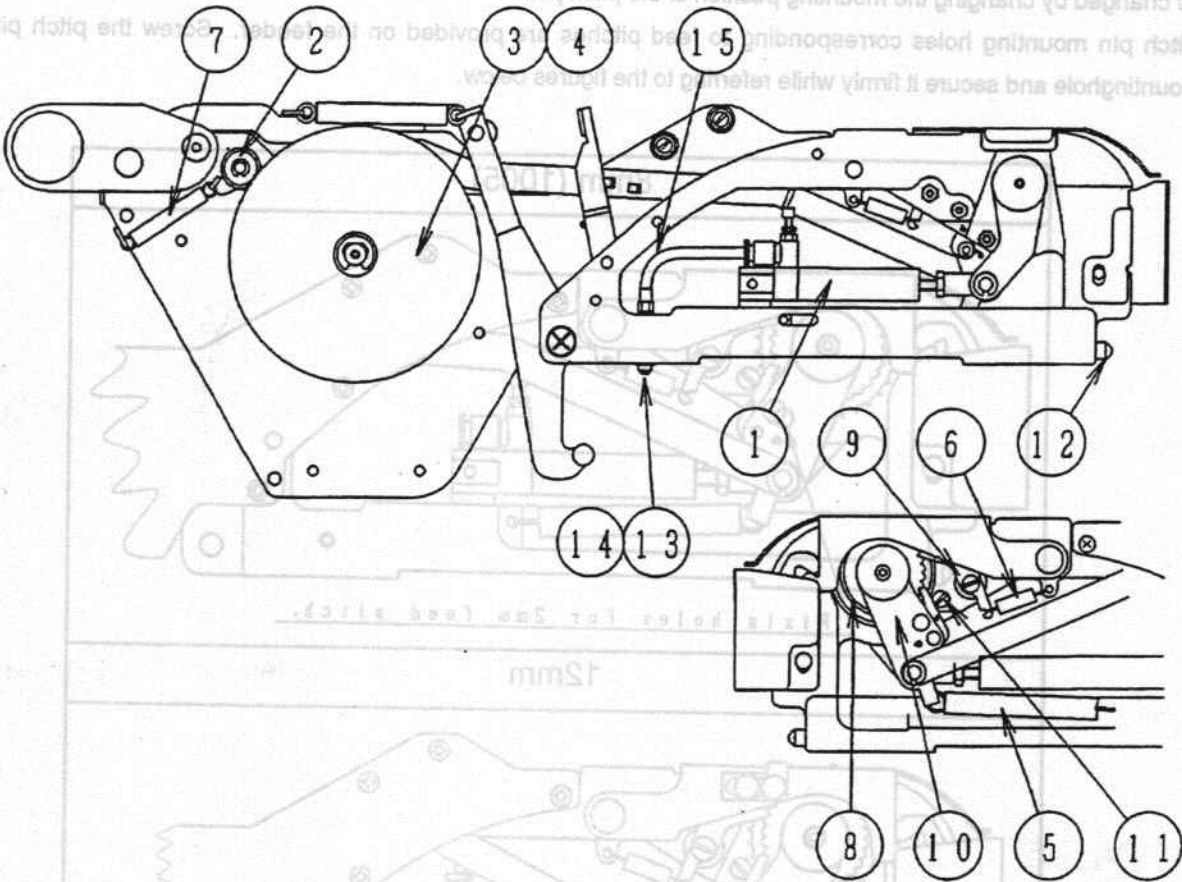
Pitch pin mounting holes corresponding to feed pitches are provided on the feeder. Screw the pitch pin in the mounting hole and secure it firmly while referring to the figures below.



5. List of consumable items

4. Setting procedure

(1) Changing the lead pitch
 A pitch pin is provided on each feeder excluding 8 mm paperemposed tape and 82 mm AA types. The lead pitch can be changed by changing the mounting position of the pitch pin.
 Pitch pin mounting holes corresponding to the pitch pin are provided on the feeder. Refer to the figure below for the pitch pin in the mounting hole and secure it firmly with the following steps.



(No.)	(Name)
①	Cylinder
②	Winding gear
③	Winding drive reel
④	Winding reel
⑤	Main spring
⑥	Back stop spring
⑦	Winding spring
⑧	Sprocket
⑨	Back stop
⑩	Ratchet ass'y
⑪	Stopper
⑫	Front pin
⑬	Air pin
⑭	O-ring
⑮	φ 4 air hose (with element)